



United Way  
Of South Central Nebraska

# LEADING THE CHARGE

## INSPIRING THE CHANGE



2023 ANNUAL REPORT

# 82nd ANNUAL MEETING

## Call to Order

## Approval of Minutes of 81st Annual Meeting

## Approval of December 2022 Financials

## President's Report

## Approval of the 2023 Slate of Officers

President:	Jason Ackles
Vice President:	Dave Long
Treasurer:	Angie Pinkerman

## Approve the Following to Serve a Second Three-Year Term

Valerie Bren	Pierce Fiala	Allison Kern
David Long	Angie Pinkerman	

## Approval of New Board Members

James Callaway	Jason Davis	Casey Molifua
Cristian Perez	Lauren Slaughter	

## Presentation of 2023 Board of Directors

### 2021 - 2024

Lisa Hubl, Shannon Nepple, Cameron Brei, Kim Graviette

### 2022 - 2025

Jason Ackles, Colleen Schukei, Kyla Habrock, Jodie Johnson, Lauren Overmiller, Shayne Raitt

### 2023 - 2026

Valerie Bren, Pierce Fiala, Allison Kern, Dave Long, Angie Pinkerman, James Callaway, Jason Davis, Casey Molifua, Cristian Perez, Lauren Slaughter

## Introduction of Outgoing Board Members

Mark Funkey, Teena Kucera, Doug Ourada, Kristi Rippe, Brian Strom

## Campaign Awards

### Introduction of Impact Award

### Introduction of Honorary Council Member

### Introduction of Spirit Award

### Introduction of Community Partnership Award

### Introduction of Inez C. Peterson Award

## Adjournment

# UNITED WAY THROUGH THE YEAR



# MINUTES OF 2022 ANNUAL MEETING

**Call meeting to Order:** Mark, 12:02 pm

**2021 Annual Meeting Minutes:** 2021 Annual Meeting minutes were reviewed with no changes. Jason made a motion to approve, Kim seconded the motion; so carried.

**2021 Financials:** Members present reviewed the financials as presented. Colleen made a motion to approve, Jason seconded the motion; so carried.

**Approval of the 2022 Slate of Officers:** President Jason Ackles, Vice President Mark Funkey, Treasurer Angie Pinkerman. Pierce made the motion to approve the slate of officers, Dave seconded the motion; so carried.

**Approve a Second Three-Year Term:** Jason Ackles & Colleen Schukei. Cameron made a motion to approve these board members for a second three-year term, Lisa seconded the motion; so carried.

**Approval of New Board Members:** Kyla Habrock, Jodie Johnson, Lauren Overmiller, Wayne Perez and Shayne Raitt. Jason made the motion to approve the new board members, Angie seconded the motion; so carried.

**Presentation of the 2022 Board of Directors:**

**2020—2023:** Mark Funkey, Teena Kucera, Valerie Bren, Pierce Fiala, Allison Kern, Angie Pinkerman, Kristi Rippe, Brian Strom

**2021—2024:** Lisa Hubl, Shannon Nepple, Doug Ourada, Cameron Brei, Kim Graviette

**2022—2025:** Jason Ackles, Colleen Schukei, Kyla Habrock, Jodie Johnson, Lauren Overmiller, Wayne Perez, Shayne Raitt

**Recognition of Outgoing Board Member:** Kaleena Fong and Jeff Schneider were recognized for their commitment to the United Way Board.

**2022 Campaign Awards:** Colleen presented the employee campaign awards and the following United Way honors as follows:

Impact Award: Julie Nash

Spirit Award: Eakes Office Solutions

Inez C Peterson Award: Matt Baack

Honorary Council Member: Eric Arneson

Community Partnership Award: Brad and Carlie Starling

**Bridging Forward:** Jodi presented Bridging Forward, with the bold goal of reducing poverty 30% by 2030, that United Way will be working on in partnership with the Community Impact Network.

**Adjourn Meeting:** Mark Funkey, 12:39pm. Kim made a motion to adjourn, Cameron seconded; so carried.



# BALANCE SHEET (as of December 31, 2022)

## ASSETS

### Current Assets

#### Checking / Savings

Five Points Bank - CD	152,743.33
Five Points Bank - Money Market	204,145.23
Five Points Bank Checking	26,615.52
Hastings Foundation - Reserve	181,400.56
Petty Cash	50.00
<b>Total Checking/Savings</b>	<b>564,954.64</b>

#### Other Current Assets

2023 Pledge Receivables	79,531.33
2022 Pledge Receivables	83,623.92
2021 Pledge Receivables	20,723.15
2020 Pledge Receivables	0.00
Allowance for Bad Debts	-44,558.25
<b>Total Other Current Assets</b>	<b>141,841.15</b>

<b>Total Current Assets</b>	<b>706,795.79</b>
-----------------------------	-------------------

<b>Fixed Assets</b>	<b>0.00</b>
---------------------	-------------

<b>Other Assets</b>	<b>291,006.16</b>
---------------------	-------------------

<b>TOTAL ASSETS</b>	<b>997,801.95</b>
---------------------	-------------------

## LIABILITIES & EQUITY

### Liabilities

Current Liabilities	221,169.17
---------------------	------------

<b>Total Liabilities</b>	<b>234,503.37</b>
--------------------------	-------------------

### Equity

Designated TFT	401.90
----------------	--------

Designated DPIL	51,927.63
-----------------	-----------

Fund Balance	375,400.18
--------------	------------

Retained Earnings	160,503.38
-------------------	------------

Net Income	-152,277.55
------------	-------------

<b>Total Equity</b>	<b>763,298.58</b>
---------------------	-------------------

<b>TOTAL LIABILITIES &amp; EQUITY</b>	<b>997,801.95</b>
---------------------------------------	-------------------

# REPORT FROM THE PRESIDENT

Our 82<sup>nd</sup> year at United Way of South Central Nebraska was a year of growth, challenges and continued transition. But with someone who is not scared of change and truly sees “the possible”, anything is possible! That someone is our Executive Director Jodi Graves. Jodi meets challenges with confidence, determination, and leadership. Jodi continues to lead the charge by asking the hard questions and ensures every dollar donated is utilized in a positive and responsible manner for our communities. We truly are lucky to have Jodi.

Thanks to new opportunities, our United Way continues to add personnel, build partnerships and collaborate with local organizations that will continue to prosper and elevate South Central Nebraska for years to come. With growth comes growing pains and United Way is not immune. As people are hired and brought on board, they find ways to fit a desk here or copier there, all the while staying focused on our mission and our area wide effort to reduce poverty 30% by 2030.

2022 put all the planning and preparation for this Bridging Forward goal into full swing. United Way’s support of YOUR community collaborative—the Community Impact Network—is helping to build poverty reduction solutions for families and individuals trying to work towards a better future. It is quite the challenging puzzle, but together with some hard work and creativity, we are starting to see the puzzle take shape. When we do this work together, even big challenges can be solved.

For example, Communities for Kids – Adams County (C4K) is trying to solve the challenges of child care so that parents can feel confident going to work knowing their children are being cared for at an affordable cost. United Way is helping launch other C4K initiatives throughout South Central Nebraska so that our entire area can find solutions for this very important piece of the puzzle moving forward.

United Way continues to gain momentum and experience with every new grant we successfully win or with every new collaboration we bridge, and people continue to take notice of what’s happening in South Central Nebraska. None of this would be possible without our amazing donors, outstanding volunteers and our core values that have followed us the last 82 years.

I would like to take a moment to thank and recognize Jodi’s team that does the amazing work day in and day out—Cassie Stenka—UW Community Coordinator, Erin Trausch CIN – Central Navigation, Brady Rhodes CIN – Collaborative Coordinator, Zayra Navarette CIN/C4K – Central Navigation, Wendy Gwennap C4K-Early Childhood Community Coordinator. Thank you all for your hard work and dedication. It does not go unnoticed.

I will end by asking each and every one of you to please continue to help, volunteer, collaborate, donate and add your piece of the puzzle so that we can continue helping families in our community achieve goals and succeed. I am honored to serve as the Board President and I am excited and optimistic to continue another year in this role.

Thank you everyone for your time, effort and continued support this past year.

Jason Ackles, 2022-2023 Board President

# TOGETHER, WE ARE...



REDUCING POVERTY **30% BY 2030**

**Bridging Forward**, a program created by the Community Impact Network and United Way of South Central Nebraska, is an innovative effort to engage **all of us** in putting individuals, families and this community on the road to stability.

### **TOGETHER WE WILL:**

- **Improve** quality of life
- **Increase** our local workforce
- **Reduce** the need for public assistance

and realize our bold goal of  
**reducing poverty 30% by 2030**  
in Adams, Clay, Nuckolls and  
Webster counties.

### **BUT WE NEED YOU!**

- COMMUNITY ORGANIZATIONS
- EMPLOYERS
- VOLUNTEERS
- DONORS

**FOR MORE INFORMATION, SCAN  
OR VISIT BRIDGINGFORWARD.ORG**



# 2023 ANNUAL AWARD RECIPIENTS

## **INEZ C. PETERSON CITIZENSHIP AWARD—**

### **Brandee Schram**



This award is about more than just supporting United Way, it's about being a good citizen and supporting the entire community, and Brandee certainly does that! For more than 10 years, Brandee has supported United Way in more ways than we can count. She served on the Board of Directors, the Impact Committee and currently serves on the Community Impact Network Steering

Committee. Brandee, and her husband, Dave led the 2021 United Way campaign with a record result. Brandee is very active in the community, volunteering and supporting numerous organizations.

## **IMPACT AWARD—South Heartland**

### **District Health Department**

The intention of the Impact Award is to shine a spotlight on those who are committed to helping United Way

carry out our mission of creating a more viable community. For the past 5 years, United Way has partnered with South Heartland District Health Department to complete the Community Health Assessment and the implementation of the Community Health Improvement Plan with the ultimate goal of improving the health of residents and reducing health disparities in our area.

SOUTH  
HEARTLAND  
DISTRICT



**HEALTH  
DEPARTMENT**

## **HONORARY COUNCIL—Jeff Schneider**



This years inductee into the United Way of South Central Nebraska Honorary Council has been actively supporting United Way for nearly 10 years, first as Campaign Chair, then board member and as Treasurer of the Board for 5 years. Jeff also leads the Hastings Public Schools United Way campaign every year. His dedication and loyalty, both to United Way, as well as the community in general,

is greatly appreciated.



## COMMUNITY PARTNERSHIP AWARD—

### PaperWorks

This award is given solely on the basis of partnering with United Way to promote our mission and campaign. PaperWorks does both of these things, and so much more.

Time and time again, they make an impact in our community. In addition to hosting our largest workplace giving campaign, they actively support our Adopt-A-Family program and sponsor numerous employee teams for the United Way Golf Classic. When there is a need, they never hesitate to ask how they can help. We are incredibly grateful for this partnership.



## SPIRIT AWARD—CPI

This award celebrates an organization with a proven spirit of giving through contributions of time, leadership and resources to United Way. For the past several years, CPI has actively participated in United Way of South Central

Nebraska's Toys for Tots program. Hosting more than 30 collection sites, CPI employees collect toys that are distributed to area children. In 2022, our Toys for Tots drive provided toys for more than 600 children which would not have been possible with the help and support of CPI.

"What has surprised me most about being on the United Way Board is the impact the United Way of South Central Nebraska has on almost every person in our 4 county area. The United Way focuses their services in three areas in the community: education, financial stability, and health. This means you or someone you know locally, has been touched in some way by the 39 programs offered by our 19 funded partner agencies. I have also learned how incredibly generous the people and businesses in our service area truly are. They give of their time, talents, and resources in so many incredible ways to serve people in need."—Lisa Hubl

# FUNDED PARTNER AGENCIES



**Adams County Diversion**—Youth and adults who have committed misdemeanor offenses are offered an opportunity from the County Attorneys to learn from their mistakes by taking responsibility for the crime they committed.



**Area Substance & Alcohol Abuse Prevention**—Striving to make a difference by educating and preventing the abuse of substances in individual lives and the lives of their loved ones.



**CASA of South Central Nebraska**—Providing trained, community volunteers to advocate for a quick, safe, permanent home for all abused or neglected children in our community.



**Catholic Social Services**—Serves families and individuals in need of emergency assistance with rent, utilities, food, and clothing.



**Community Action Partnership of Mid-Nebraska**—Providing essential programs that help individuals, families, and communities reach their fullest potential through advocacy and partnerships.



**Encourage Advocacy Center**—Provides support, guidance, and education to men, women, and children to live a life free from domestic and sexual violence.



**Hastings Literacy Program**—Offers adult education classes for GED® Test Preparation, English as a Second Language, Basic Education in Math and Reading, and Career Pathways Employability Skills to individuals in our community.

**Hastings Respite Care, Inc**—Designed to provide short-term relief to families of persons with special needs such as mental issues, cerebral palsy, autism, epilepsy, as well as the chronically ill and the elderly.



**Healthy Beginnings**—Providing a cost effective nurse home visitation program that will improve pregnancy outcomes, child health, growth and development, and self-sufficiency for program eligible families.



**Kenesaw United Child Care Coalition**—Dedicated to providing high quality care in a safe, nurturing environment, for all children in Kenesaw and the surrounding communities.



**Lutheran Family Services—At Ease**—Non-traditional behavioral health service connecting with not only the veteran, or military member, but their family as well.



**Maryland Living Center**—Transitional Living Facility that aims to successfully transition homeless and aged-out foster youth, between the ages of 16 and 21, into independent living situations.



**MentoringWorks**—Connecting youth and mentors to build long-lasting, mutually beneficial relationships that make a difference for individuals and the community.



**Revive Ministries**—Providing clean, sober living space for individuals to live while participating in our rehabilitation and counseling treatment programs.



**Scouts—Overland Trail Council**—Preparing young people to make ethical and moral choices over their lifetimes by instilling the values of the Scout Oath and Scout Law in them.



**Senior Action, Inc**—Providing meaningful volunteer opportunities with programs and services in the community that enhance people's quality of life through programs such as the Foster Grandparent program and Meals on Wheels.



**Special Children's Fund**—Assuring every child receives medical care promptly and prevent secondary problems related to a delay in health care, relieve financial stress, and promote family unity.



**STARS (Striving Towards Attendance Realizing Success)**—A school and family-based initiative that provides intense intervention to stop excessive absences among students.



**TeamMates**—Matches caring adults with students in 6—12th grade, aiming to support their match for the longevity of their school career and offer support and possible scholarships for their post-secondary education.



**YWCA**—Dedicated to eliminating racism, empowering women and promoting peace, justice, freedom and dignity for all.

Thank you to these United Way Partner Agencies, for the inspiring work you do in Adams, Clay, Nuckolls and Webster Counties. Our communities are lucky to have such dedicated, compassionate people working in these agencies. Each of you inspire us and remind us that together, we can *Live United*.

# FUNDED PROGRAMS

## HEALTH PROGRAMS

Meals on Wheels - Senior Action  
Special Children's Fund  
Crisis Line & AIR Program - enCourage Advocacy Center  
Domestic Violence Intervention Program - enCourage Advocacy Center  
Hastings Respite Care  
Healthy Beginnings  
Commodity Foods - Community Action Partnership  
Court Appointed Special Advocates - CASA  
Lending Library - Area Substance & Alcohol Abuse Prevention (ASAAP)  
Mobile Food Pantries - Catholic Social Services  
Food Redistribution Program - Catholic Social Services

## INCOME PROGRAMS

Family Support Services - Catholic Social Services  
Homeless Prevention - Community Action Partnership  
Maryland Living Center  
Lutheran Family Services - Military and Veteran Services  
FamilyWize RX Discount  
RYDE Transit - Community Action Partnership  
Community Impact Network  
Toys For Tots  
Wheels for Work

## EDUCATION PROGRAMS

Diversion - Adams County Diversion  
Striving Towards Attendance Realizing Success - STARS  
Mentor Training - Teammates  
Youth Outreach & Education - YWCA  
Community Education - YWCA  
After School Zone - YWCA  
Childcare - Kenesaw United Child Care Coalition  
Foster Grandparent - Senior Action  
Adult/Juvenile Substance Abuse Programs - Horizon Recovery & Counseling  
Adult/Juvenile Mental Health Programs - Horizon Recovery & Counseling  
ESL/Civics/Citizenship/GED/ABE - Hastings Literacy Program  
SAY Community Education - Area Substance & Alcohol Abuse Prevention (ASAAP)  
SchoolConnect - MentoringWorks  
CareerConnect - MentoringWorks  
Scouting - Scouts, Overland Trails Council  
Communities 4 Kids, Adams County  
Born Learning Trail  
Stuff The Bus  
Student United Way  
Dolly Parton's Imagination Library

“Because of United Way, Hastings Respite Care has been supporting area Family Caregivers since 1985.”  
- Jinx Hackler

# UNITED WAY PROGRAMS



Created by the Community Impact Network and supported by United Way, Bridging Forward is an innovative poverty-reduction effort to engage all of us in putting individuals, families and the community on the road to stability. The initiative brings together United Way agencies and 20+ other programs and institutions to reduce poverty 30% by 2030 in Adams, Clay, Nuckolls and Webster Counties.



The Community IMPACT Network of Adams, Clay, Nuckolls and Webster Counties brings together a cross sector collaboration of organizations to improve the well-being of children and families through community prevention efforts.



Adams County Communities for Kids is a collaboration of organizations who want to grow, improve and develop early care and education programs for our youth to create lasting change for our community.



Dolly Parton's Imagination Library, funded by United Way of South Central Nebraska, provides a free book each month to a child from birth to age 5. 13,716 books were sent to children in Adams, Clay, Nuckolls and Webster counties in 2022.

## Wheels for Work

Hastings Ford Lincoln accepts donated vehicles into the program and performs necessary safety repairs. The car is then matched with a family in need of a vehicle through United Way partner agencies. Giving a family a car makes child care, school, jobs, groceries, and medical appointments easily accessible—things that are so easily taken for granted by those who have never been without a vehicle.



United Way of South Central Nebraska is proud to partner with the Marine Corps to bring the Toys for Tots Program to our communities. The program is enhanced by area businesses hosting toy drives.



It's critically important for ALL kids to start the school year with the right supplies. That's why each fall United Way of South Central Nebraska engages local businesses and Individuals in a school supply drive.



Born Learning is an engagement trail that helps parents explore ways to turn everyday moments into fun learning opportunities.



The FamilyWise Prescription Drug Discount Card allows you to receive discounts on prescription medications at participating pharmacies. This is not insurance, rather a program that offers discounts at participating pharmacies.



## EMPLOYER/EMPLOYEE COMBINED CAMPAIGNS

### Top 10 Campaigns

Paperworks Packaging	\$50,753.94
Mary Lanning Healthcare	\$44,029.38
Dutton-Lainson Company	\$44,000.00
T-L Irrigation Company	\$35,190.00
Five Points Bank	\$30,484.00
Hastings Public Schools	\$17,853.87
Eaton Corporation	\$10,000.00
Redline Specialty Pharmacy	\$8,851.00
City of Hastings	\$7,049.00
Pinnacle Bank	\$6,968.00

### FIRMS REPORTING AN INCREASE OF 5% OR MORE!

Allo Communications	Idea Bank Marketing
Black Hills Energy	MNB Bank
Centennial Plastics	Paperworks Packaging
Chief Ethanol Fuels, Inc	Redline Pharmacy
City of Hastings	Revive Ministries
Contryman Associates	Senior Action
Eakes Office Plus	T-L Irrigation Company
Hastings Vision Clinic	United Way of South
Heartland Bank	Central Nebraska

"I knew many of the great programs that United Way supports before being asked to serve on the board. However, in talking with the different programs I had no idea of the magnitude and impact on families in our area that depend on United Way funds."

-David Long

## CRYSTAL AWARDS—OVER \$10,000

Dutton-Lainson Company  
Eaton Corporation  
Five Points Bank  
Hastings Public Schools

Mary Lanning Healthcare  
Paperworks Packaging  
T-L Irrigation Company

## PLATINUM AWARDS—\$5,000—\$9,999

AGP  
Centennial Plastics Inc  
City of Hastings

Heartland Bank  
Pinnacle Bank  
Redline Specialty Pharmacy

## GOLD AWARDS—\$1,000—\$4,999

Allo Communications  
Black Hills Energy  
Central Community College  
Chief Ethanol Fuels, Inc  
Contryman Associates  
Eakes Office Plus, Inc  
Flowserve  
Hastings College  
Hastings Irrigation Pipe

Hastings Vision Clinic  
MNB Bank  
Oakeson Steiner Wealth &  
Retirement  
Quality Sound & Water, Inc  
Thermo King  
United Way of South Central  
Nebraska

## SILVER AWARDS—\$500—\$999

Brodstone Healthcare  
First Interstate Bank  
Idea Bank Marketing

Lutz  
Nebraska Truck Center  
US Bank

## BRONZE AWARDS—\$250—\$499

Community Action Partnership  
Nebraska Public Power District

O'Reilly Auto Parts  
The Bridge, Inc.

# **BUSINESS & ORGANIZATION SUPPORT**

## **Leadership Platinum Level - \$5,000 +**

BNSF Foundation

Hastings Community  
Foundation

Morrison Enterprises

## **Leadership Gold Level - \$1,000 to \$4,999**

American Family—Matt Jurgena

Animal Clinic

Apple Roofing

Bert's Pharmacy

Bruce Furniture

Five Points Bank

GTA Insurance Group

Hastings Family Dental

Hastings Ford Lincoln

Hastings Kiwanis Club

Hastings Vision Clinic

Imperial Jewelers

Johnson Imperial Homes of  
Hastings

Nelson Financial

Paperworks

Prairie Title Inc

Werner Construction

## **Leadership Silver Level - \$500 to \$999**

Bernard Pavelka Trucking Inc

Bruce Furniture

C&A Incorporated

CMBA Architects

Computer Hardware

Consolidated Concrete Co./  
H & M Equipment

Gessford Machine Shop, Inc

Guarantee Electric

Hastings Corporation

Hastings Federal Credit Union

Heartland Bank

Johnson Concrete Products Co

Livingston Butler Volland  
Funeral Home

Lochland Country Club

Pauley Lumber Co.

Pinnacle Bank

Rutt's Heating & AC, Inc.

Thomsen Oil Company

Timm's Service LLC

Tom Dinsdale CDJR

Woodward's Disposal Service

Ziembra Roofing

## **Leadership Bronze Level - \$250 - \$499**

Anonymous

Allo

Big G Ace

Klein Insurance Company

Quirk Land & Cattle Co

# 2022 SPONSORSHIPS

**2022 Golf Classic Title Sponsor** - Apple Roofing

**2022 Golf Classic Beverage Sponsors** - Nebraskaland Distributors

**2022 Golf Classic Lunch Sponsor** - Hastings Ford Lincoln

**2022 Golf Classic Prize Sponsor** - GTA Insurance Group

## **2022 Golf Classic Sponsors**

Allo	American Family—Matt Jurgena
Apple Roofing	Bruce Furniture
Central Dental Group	CMBA
Five Points Bank	GTA Insurance Group
Hastings Family Dental	Hastings Ford Lincoln
Hastings Vision	Heartland Bank
Lochland Country Club	John & Marsha Nelson
Nelson Financial Services	Paperworks
Pinnacle Bank	Thermo King
Tom Dinsdale CDJR	Werner Construction

**2022 Campaign Video** - IdeaBank Marketing

## **Toys for Tots Collection Sites -**

All CPI Locations	Edward Jones—Judy Nabower
Hastings Area Chamber of Commerce	Hastings Ford Lincoln
Hastings Vision Clinic	Home Federal Bank
Menards	PTSR
Small Town Famous	

“Because of United Way, we have a network of like-minded friends and colleagues to collaborate with when working to resolve local issues.”

-Debby Shuck, Senior Action

# INDIVIDUAL GIFTS

## **Tocqueville - \$10,000 +**

Anonymous Donor

Anonymous Donor

## **Pillar - \$5,000 +**

Jane and Cal Johnson

Hilarie and Tim Redline

## **Cornerstone - \$1,000—\$4,999**

Anonymous

Tyler and Stephanie Adam

Jeff and Lori Anderson

Alan and Mary Kay Anderson

Terry and Suzanne Anstine

Eric and Ashley Arneson

Tom & Shawn Bramble

David Brandt

Dawne and Dale Brooks

Monte Buttell

Mark and Michelle Callahan

James Callaway

Duane and Mary Coulter

Paula and Dave Cure

Paul and Tricia Dietze

Colin Elley

Danielle & Shane Erickson

Vonda Essex

Dave and Barb Fisher

Edward Fleharty

Lyle and Diann Fleharty

Matt and Kaleena Fong

Nate and Nicole Gengenbach

Danny and Jodi Graves

Matt and Suzanne Greenquist

Jeff and Tammy Halloran

Sarah Hayek

Bob and Jan Herbek

Charles and Margaret Hermes

William and Amy Hermes

Marty and Judy Hoch

John and Lynn Hohlen

George and Jeni Howard

Kevin Johnson

Howard and Belva Junker

Craig and Lesa Kautz

Mark and Peggy Keiser

Pat and Kim Kern

Patty Kingsley

Terry and Susan Klatt

Marcia Konen

Greg and Teena Kucera

Dr. Susan and Brad Lindblad

Tanya and Bill Lindsteadt

David and Cindy Long

Marc Lubken

Betty McClure

Shawn McShane

Susan Meeske and Brady Rhodes

Jill and Craig Melvin

Pat Mertens

John and Marsha Nelson

Mary Lou and Charles Neumann

Pamela O'Dey

Doug and Lorri Oakeson

Jorn and Mary Olsen

Todd Pankratz and Jessica Meeske

Eugene Peck

Cathy and John Pershing

Marty and Angela Pinkerman

Deb Hardin Quirk

Kristi and Dave Rippe

Larry and Vicki Rouse

Deb and David Schnase

Jeff and Abby Schneider

Greg Schneider

David and Brandee Schram

Troy and Leslie Schroeder

Roger and Cheryl Schukei

David Sell

Steven and Nanette Shackelford

Katlyn Simonton

Anita and Dean Simpson

Andy Wagoner

Scott Weber

Andy & Lexi Wichelt

Beth and Ron Wissing

Mike and Nancy Ziemba



## Foundation - \$500 - \$999

Anonymous  
Anonymous  
Anonymous  
Anonymous  
Anonymous  
Anonymous  
Anonymous  
Anonymous  
Anonymous  
Jason and Nicole Ackles  
Lafe Anderson  
Clarence Anderson, Jr.  
Sheri and Richard Arneson  
Matt and Heather Baack  
Dr. & Mrs. Larry Baker  
Eric Barber  
Gary Barth  
Andy and Dawnita Beirow  
Clint Boss  
Terri Brown  
Jeff and Carla Byrnes  
Julie Chilcott  
Cynthia Clark  
Brian and Tammy Consbruck  
Chris Culver  
Ryan and Cindy Cummins  
Cory Deweese  
Jeff and Janet Dobbins  
Alicia Douglas  
Chandra Douglas  
Carrie and Mike Edwards  
Melissa Edwards  
Jeremy Evans  
Elizabeth Florian  
Mark and Beth Funkey  
Sam George  
Bob Glenn  
Mat and Kyla Habrock  
Charles and Jeanne Hastings  
Tami Heinrichs  
Cheryl Helzer  
Scott Herndon  
Deb and Steve Hinrichs  
Michael Johnson  
Mike and Melissa Karloff  
Dr. Mark and Jami Keller  
Christina and Gene Kile  
Russ & Taylor Kindig  
Sandy Klimek-Milton

Randy and Brenda Knapp  
Stanley and Marcy Knudson  
Doug & Becky Koopman  
Tory Kort  
Vicki Kucera  
Scott and Megan Kvols  
Laura C. Lindholm  
Tamara Lipker  
Craig and Becky Marble  
Monte and Michelle McIntyre  
Brenda and Ken McKenzie  
Lawrence and Dorothy McKinnis  
Michael and Rebecca Meyer  
Sheila Minnick  
Dean and Brenda Moors  
Jason Moser  
Chandra Muske  
Craig and Amy Nelson  
Mike Nevriy  
Kristin and Douglas Pauley  
David Plond  
Dale Potter  
Christine Ramirez  
Paul Ramirez  
Curtis and Kathy Reimer  
Clyde Sachtleben  
Aaron and Megan Schardt  
Collin Schnase  
Chris and Colleen Schukei  
Dale and Kathy Schultz  
Jolynn Segelke  
Jerry and Mary Seiler  
Anthony Shafer  
Andrew and Marjorie  
Stewart-Hernandez  
Shane Stone  
Denny Storer  
Brian Strom  
Dave and Deb Stuehrenberg  
Brooklyn Tellez  
Sheri Trindle  
Tara Vance  
Michael Walenz  
Justin and Kili Wenburg  
Donnie Wiggins  
Irene Wirt

## Individual Contributors - \$250—\$499

Anonymous	Amanda Esch
Anonymous	Aarin and Danielle Fellows
Anonymous	Eric Fleming
Anonymous	Laura Furrow
Anonymous	Angela Gill
Anonymous	Carol Hamik
Anonymous	Esther Harig
Anonymous	Scott and Rita Harmon
Merry and Steven Ablott	Tara Hemberger
Shannon Acolatse	Mark Hemje
Marc Anderson	Michele and Mike Henke
Kalen and Kayla Arehart	Tammy Henry
Dennise Bainbridge	Elizabeth Herrman
Matt Ballheim	Gary and Debra Hinrichs
Denise Behrends	Matt Hoban
Ginger Billesbach	Lisa Hubl
James Black	Frank Husted Jr.
Gabriell Bohrer	Pat Jacobi
Kathryn Boltz	Patrick Johnston
Kathryn Borrell	Cindy Kathman
Kelly Boyd	Gloria and Neal Katzberg
Michael Bruns	Michele Kimle
Stephanie Brubaker	Brett Kinney
Vickie Bulling	Cheriton Kistner
Tammy and Brian Burns	Jennifer Kohtz
Mark and Sarah Canada	Stacy Kral
Wade Chase	Tina Kumke
Maria Chavez	Ananda Kyle
Randy and Pat Chick	Terry and Dian Larsen
Joshua Christensen	Timothy and Barbara Lebsack
Kenneth Coelho	Nancy and Don Lemke
Raymond and LuAnne Conant	Keith Leonhardt
Liz Creech	Jennifer Loettere
Bruce Cutright	Katherine Lonergan
Bradley and Mary Dalrymple	Anita Lounsbury
Karen Daniels	Brandan Lubken
Michael Davidson	Amy Lusk
Vanessa Dericks	Chace Lutz
Michelle Dodson	Brendel Maier
Charles and Sigrid Eigenberg	Shelley Martinez
Diane Eiseman	Laura Marvel Wunderlich
Christopher Elliott	Lisa McCormick
Emily Email	Jason and Justine McMurray

## Individual Contributors - \$250—\$499 continued...

Tony Melvin  
Melisa Mendez  
Michael Mertens  
Sara and Ronald Meyer  
Brandon and Tabitha Miller  
Yolanda Molette  
Donna Munsell  
Norman Nackerud  
Jayne Nelson  
Barb Ninabuck  
Mark Nollette  
Zane Norton  
Lisa Novak  
Ross Ostendorf  
Dan Peters  
Shelli Pfeifer  
Denice Pleak  
Wayne Pohlmeier  
Steve Poppe  
Joan Quinn  
Kimberly Reed  
Roberta and Irvin Reed  
Debra Reiners  
Luke Reinke  
Brandon Rewerts  
Leslie Robbins  
Caleb Roberts  
Dick and Kathy Samuelson

Ed and Margaret Schlachter  
Jerry Schmitt  
Sherrill Schumm  
Doug and Linda Schwenka  
Brent Sexton  
Scott Shreve  
Debby Shuck  
Barb Smith  
Suanne Soden  
Mark Spencer  
Justin and Cassandra Stenka  
Melissa Struss  
Corey and Laura Stutte  
Becky Sullivan  
Cory Theesen  
Becky Tideman  
Shelly Tork  
Andrew and Erin Trausch  
Tom Trausch  
Soe Min Tun  
Loren Uden  
Colleen Vacek  
Mike Wengler  
Patricia Weseman  
Abbie Williams  
Gary Witmer  
Lori Wright  
Steve Ziemba

The program gives me a sense of direction. I'm one of those people that I start a lot of things and I don't finish a lot of things. I give up a lot on myself. Bridging Forward gives me a step-by-step reality of what I need to do to get to where I need to be. They don't do the work for you. You have to do the work. You are the engine behind your own dreams, but they are there for you. They are that helping hand. They are there to get you where you need to be.

-Chara, Bridging Forward Participant

# 2023 BOARD OF DIRECTORS



**Jason Ackles\***  
**Board President**  
GTA Insurance Group



**David Long\***  
**Board Vice-President**  
Mary Lanning Healthcare



**Angie Pinkerman\***  
**Board Treasurer**  
MNB Bank



**Cameron Brei**  
Principal Financial



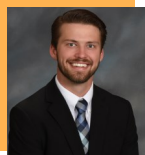
**Valerie Bren**  
Central Community College



**James Callaway**  
Thermo King



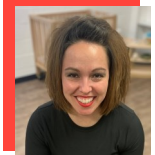
**Jason Davis**  
Central Community College



**Pierce Fiala\***  
Skalka, Baack & Fiala Law Firm, LLC



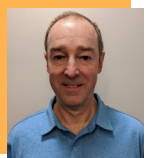
**Kim Graviette**  
Hastings College



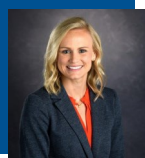
**Kyla Habrock**  
Hastings Early Child Development Center



**Lisa Hubl\***  
Nebraska Department of Labor



**Jodie Johnson**  
AGP



**Allison Kern**  
Hastings Family Dental



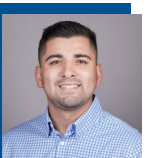
**Casey Molifua**  
Hastings College



**Shannon Nepple**  
Adams Central Schools



**Lauren Overmiller\***  
Allo



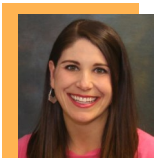
**Cristian Perez**  
Ellerbrock-Norris



**Shayne Raitt**  
Computer Hardware



**Colleen Schukei\***  
NTV News



**Lauren Slaughter**  
Heartwell Renewables

**\*Executive Committee**

"As a United Way Board Member, I am grateful for the opportunity to see first-hand the positive impact United Way has on our community. I have loved learning about new non-profit organizations in our area and it is great seeing the creative ways our local organizations collaborate to better South Central Nebraska."  
-Pierce Fiala

# UNITED WAY STAFF



From left:

Brady Rhodes—Collaborative Coordinator

Zayra Navarrete—Bi-lingual Central Navigator

Cassie Stenka—Community Coordinator

Jodi Graves—Executive Director

Wendy Gwennap—Early Childhood Community Coordinator

Erin Trausch—Central Navigator

Because of United Way, we have been able to help provide safe and permanent homes for nearly 3,000 children since we first started receiving funding.

-RuAnn Root, CASA



**LIVE UNITED**

**United  
Way**



**United Way of South Central Nebraska**